

## Cocker Spaniel

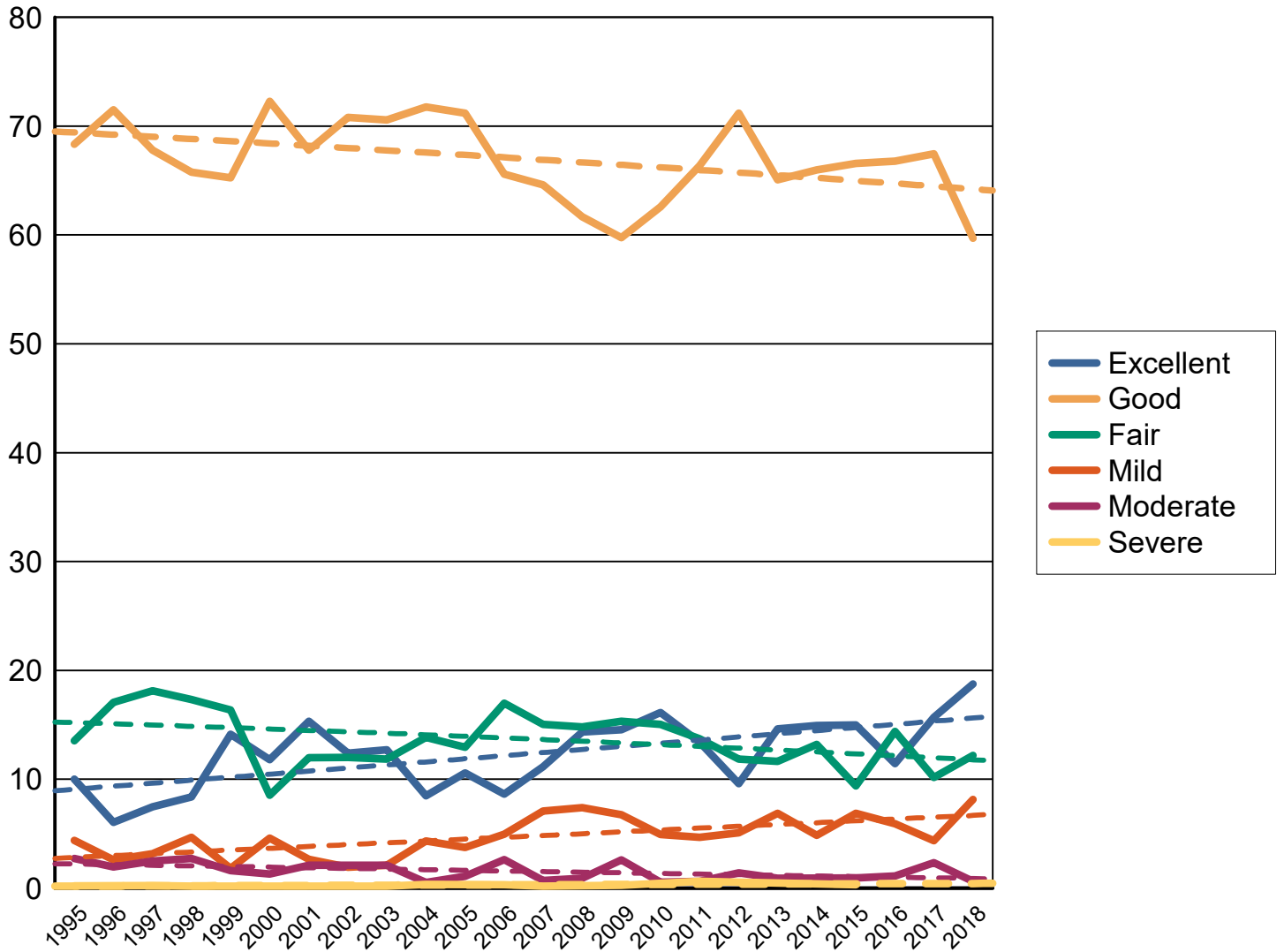
All data as of 12-31-2018

*Dysplastic rank, all  
breeds with more  
than 100 cases*

		<i>Normals</i>		<i>Equivocal or Carrier</i>		<i>Abnormal</i>	
Hips	132 of 181	13734	92.84%	90	0.61%	969	6.55% CHIC required
Elbow	111 of 121	611	98.71%	3	0.48%	5	0.81%
Cardiac		414	99.28%	3	0.72%	0	
Thyroid		267	81.90%	35	10.74%	24	7.36%
Degenerative Myelopathy		11	91.67%	1	8.33%	0	
Baer Hearing Test		5	100.00%	0		0	
Progressive Retinal Atrophy		82	97.62%	2	2.38%	0	
Legg-Calve-Perthes		1987	99.95%	0		1	0.05%
Advanced Cardiac		11	100.00%	0		0	
Adult Onset Neuropathy		52	86.67%	8	13.33%	0	
Ovc Hips		1	100.00%	0		0	
OFA EYE Registry		1504	97.16%	0		44	2.84% CHIC required
Dentition Database		54	94.74%	0		3	5.26%
Shoulder		6	100.00%	0		0	
Patella		1300	90.72%	0		133	9.28%
Familial Nephropathy		1	100.00%	0		0	
Phosphofructokinase Deficiency		26	100.00%	0		0	
Von Willebrands Cornell Blood Assay		1	100.00%	0		0	

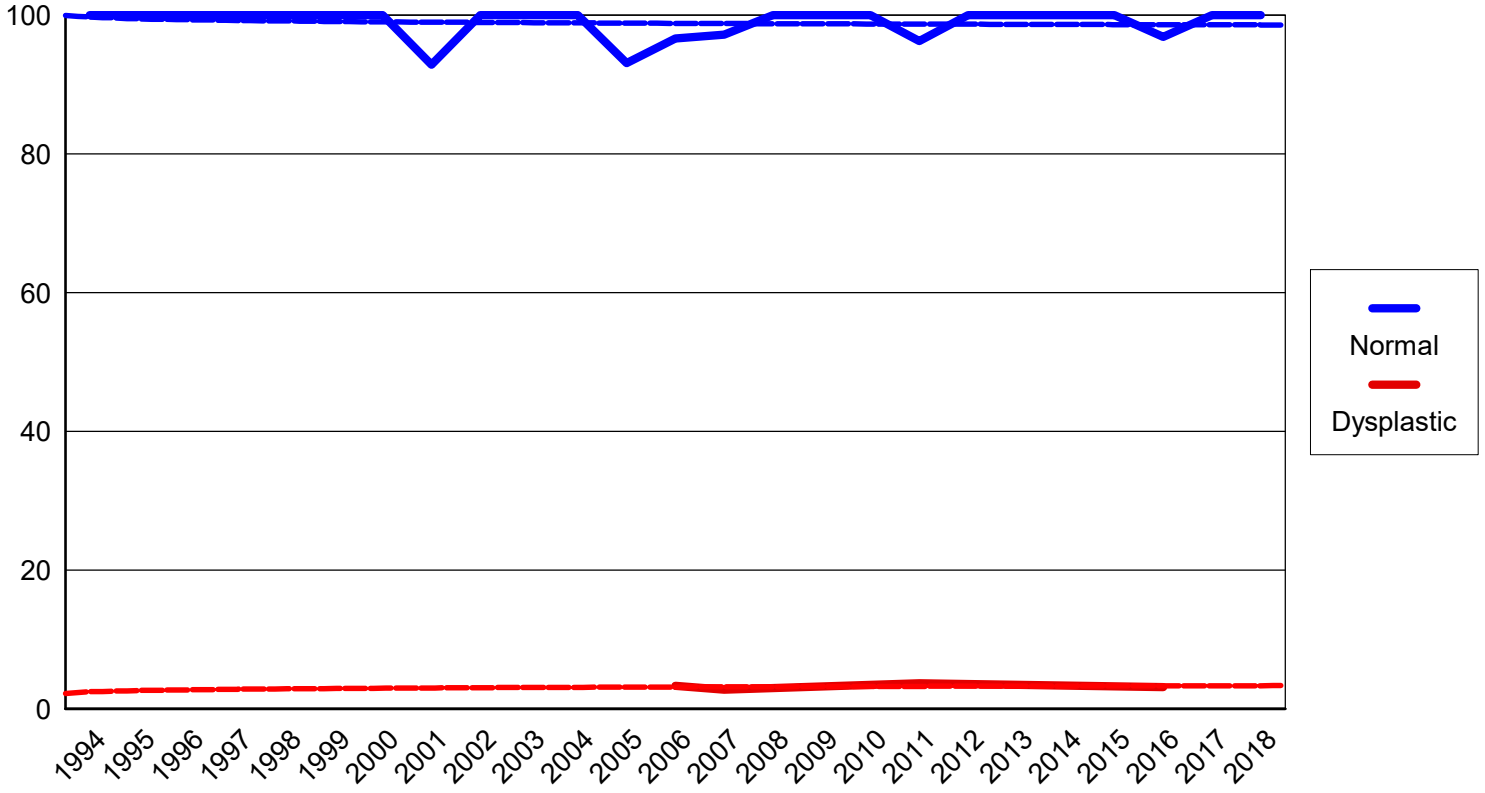
COCKER SPANIEL

Hip percentages by rating with trendlines



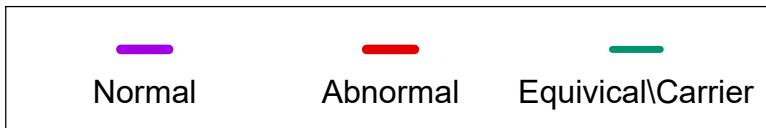
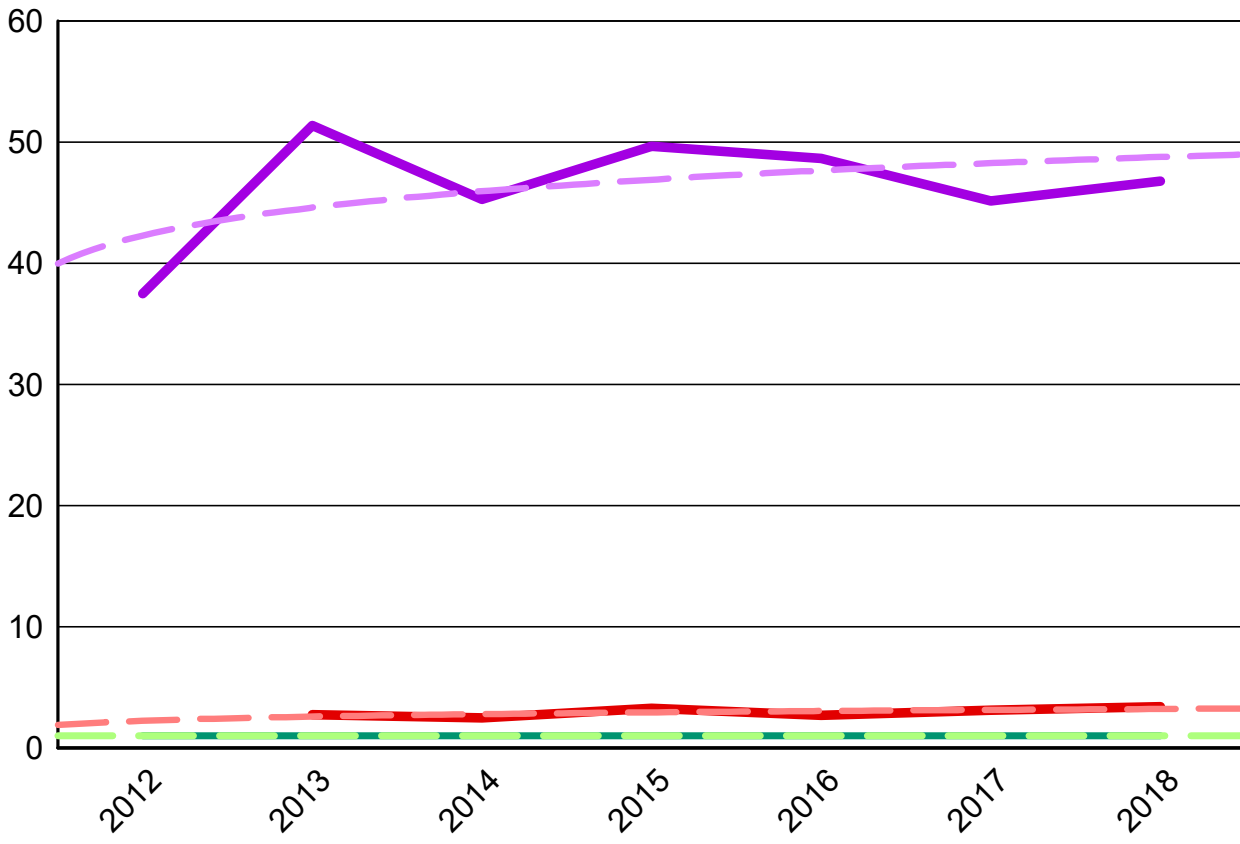
# COCKER SPANIEL

## Elbow percentages by rating with trendlines



EYES

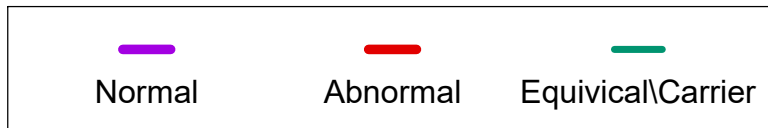
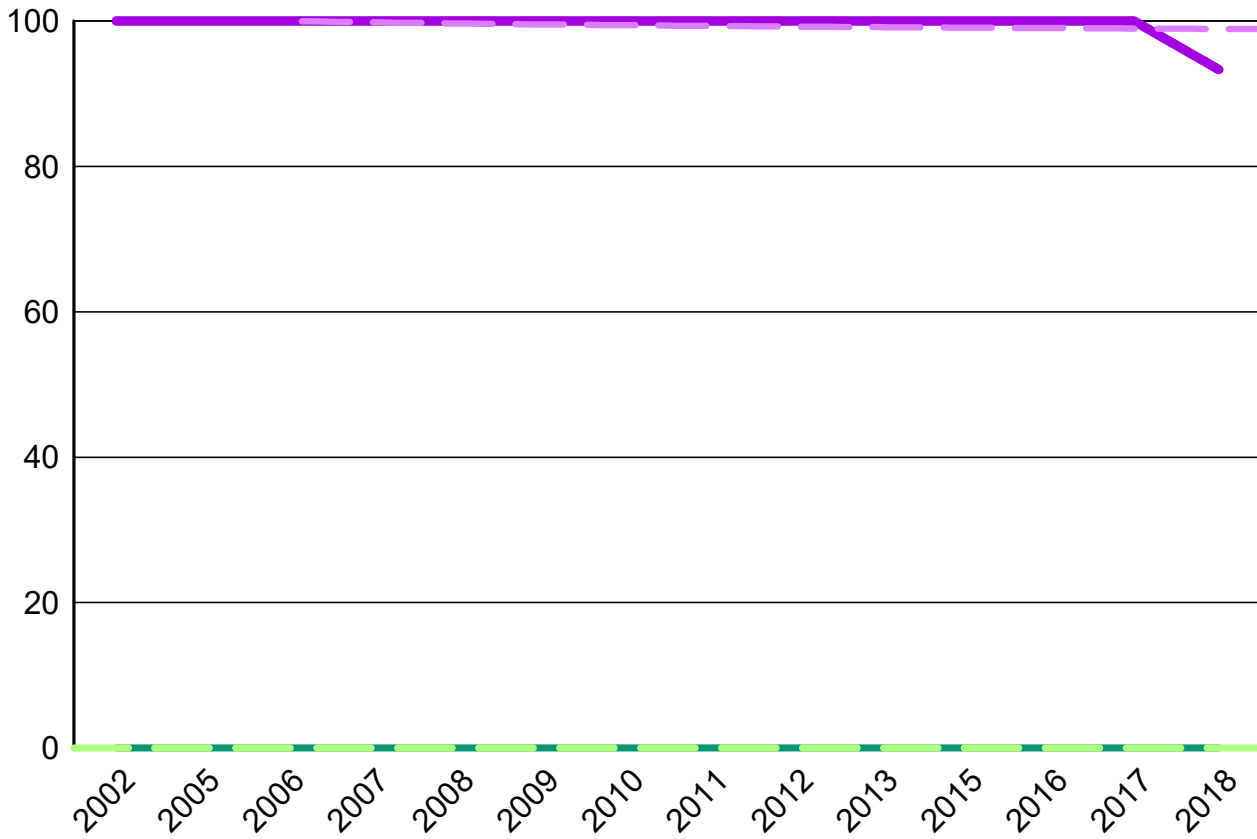
COCKER SPANIEL



COCKER SPANIEL

LEGG-CALVE-PERTHES

COCKER SPANIEL



**Percent submitted to the open registry**

**Hips**

<i>Report year</i>	<i>Cases</i>	<i>Excellent</i> %	<i>Good</i> %	<i>Fair</i> %	<i>Borderline</i> %	<i>Mild</i> %	<i>Moderate</i> %	<i>Severe</i> %
1974		2 11.76%	14 82.35%				1 5.88%	
1975		12 19.35%	39 62.90%	4 6.45%		3 4.84%	3 4.84%	1 1.61%
1976		9 15.79%	32 56.14%	8 14.04%	1 1.75%	3 5.26%	4 7.02%	
1977		4 8.89%	30 66.67%	6 13.33%	1 2.22%	2 4.44%	2 4.44%	
1978		6 20.69%	16 55.17%	6 20.69%		1 3.45%		
1979		8 22.22%	23 63.89%	3 8.33%		2 5.56%		
1980		5 19.23%	16 61.54%	3 11.54%			2 7.69%	
1981		4 12.90%	23 74.19%	3 9.68%				1 3.23%
1982			14 82.35%	3 17.65%				
1983		2 4.35%	37 80.43%	3 6.52%		1 2.17%	3 6.52%	
1984		7 7.95%	63 71.59%	13 14.77%		2 2.27%	2 2.27%	1 1.14%
1985		16 5.46%	209 71.33%	38 12.97%		16 5.46%	11 3.75%	3 1.02%
1986	267	25 9.36%	181 67.79%	37 13.86%	2 0.75%	11 4.12%	6 2.25%	5 1.87%
1987	252	21 8.24%	162 63.53%	43 16.86%	1 0.39%	14 5.49%	10 3.92%	1 0.39%
1988	346	45 13.01%	222 64.16%	53 15.32%	2 0.58%	13 3.76%	9 2.60%	2 0.58%
1989		35 11.15%	201 64.01%	52 16.56%		16 5.10%	10 3.18%	
1990		36 9.30%	260 67.18%	62 16.02%	2 0.52%	15 3.88%	12 3.10%	
1991	416	46 11.06%	245 58.89%	85 20.43%	3 0.72%	23 5.53%	13 3.13%	1 0.24%
1992	417	30 7.19%	266 63.79%	91 21.82%	2 0.48%	19 4.56%	8 1.92%	1 0.24%
1993	476	37 7.77%	338 71.01%	78 16.39%	1 0.21%	11 2.31%	9 1.89%	2 0.42%
1994	482	47 9.73%	332 68.74%	73 15.11%	3 0.62%	17 3.52%	7 1.45%	3 0.62%
1995	479	48 10.00%	328 68.33%	65 13.54%	3 0.63%	21 4.38%	13 2.71%	1 0.21%

**Percent submitted to the open registry**

**Hips**

Report year	Cases	Excellent %	Good %	Fair %	Borderline %	Mild %	Moderate %	Severe %
1996		28 6.05%	331 71.49%	79 17.06%	3 0.65%	12 2.59%	9 1.94%	
1997	440	33 7.48%	299 67.80%	80 18.14%	2 0.45%	14 3.17%	11 2.49%	1 0.23%
1998	514	43 8.37%	338 65.76%	89 17.32%	5 0.97%	24 4.67%	14 2.72%	1 0.19%
1999		70 14.14%	323 65.25%	81 16.36%	4 0.81%	9 1.82%	8 1.62%	
2000		54 11.79%	331 72.27%	39 8.52%	5 1.09%	21 4.59%	6 1.31%	
2001		87 15.32%	385 67.78%	68 11.97%	1 0.18%	15 2.64%	12 2.11%	
2002		65 12.40%	371 70.80%	63 12.02%	4 0.76%	10 1.91%	11 2.10%	
2003	574	73 12.72%	405 70.56%	68 11.85%	3 0.52%	12 2.09%	12 2.09%	1 0.17%
2004	576	49 8.49%	414 71.75%	80 13.86%	3 0.52%	25 4.33%	3 0.52%	2 0.35%
2005		68 10.59%	457 71.18%	83 12.93%	3 0.47%	24 3.74%	7 1.09%	
2006	648	56 8.64%	425 65.59%	110 16.98%	6 0.93%	32 4.94%	17 2.62%	2 0.31%
2007	565	63 11.15%	365 64.60%	85 15.04%	7 1.24%	40 7.08%	4 0.71%	1 0.18%
2008		64 14.35%	275 61.66%	66 14.80%	4 0.90%	33 7.40%	4 0.90%	
2009	385	56 14.55%	230 59.74%	59 15.32%	3 0.78%	26 6.75%	10 2.60%	1 0.26%
2010		59 16.12%	229 62.57%	55 15.03%	3 0.82%	18 4.92%	2 0.55%	
2011	321	43 13.40%	213 66.36%	44 13.71%	2 0.62%	15 4.67%	2 0.62%	2 0.62%
2012		34 9.60%	252 71.19%	42 11.86%	2 0.56%	18 5.08%	5 1.41%	
2013		49 14.63%	218 65.07%	39 11.64%	3 0.90%	23 6.87%	3 0.90%	
2014		43 14.93%	190 65.97%	38 13.19%	2 0.69%	14 4.86%		
2015	318	48 15.00%	213 66.56%	30 9.38%	1 0.31%	22 6.88%	3 0.94%	1 0.31%
2016		31 11.44%	181 66.79%	39 14.39%	1 0.37%	16 5.90%	3 1.11%	
2017		54 15.70%	232 67.44%	35 10.17%		15 4.36%	8 2.33%	
2018		60 18.75%	191 59.69%	39 12.19%	2 0.63%	26 8.13%	2 0.63%	

**Percent submitted to the open registry**

**Hips**

<i>Report year</i>	<i>Cases</i>	<i>Excellent</i> %	<i>Good</i> %	<i>Fair</i> %	<i>Borderline</i> %	<i>Mild</i> %	<i>Moderate</i> %	<i>Severe</i> %
<b>Totals</b>	<b>14,793</b>	<b>1,675</b> <b>11.31%</b>	<b>9,919</b> <b>66.99%</b>	<b>2,140</b> <b>14.45%</b>	<b>90</b> <b>0.61%</b>	<b>654</b> <b>4.42%</b>	<b>281</b> <b>1.90%</b>	<b>34</b> <b>0.23%</b>



**Elbow**

<i>Report Year</i>	<i>Cases</i>	<i>Normal %</i>	<i>Grade 1 %</i>	<i>Grade 2 %</i>	<i>Grade 3 %</i>	<i>Borderline %</i>
1993	5	5 100.00%				
1994	6	6 100.00%				
1995	2	2 100.00%				
1996	4	4 100.00%				
1997	8	8 100.00%				
1998	8	8 100.00%				
1999	9	9 100.00%				
2000	11	11 100.00%				
2001	14	13 92.86%				1 7.14%
2002	21	21 100.00%				
2003	22	22 100.00%				
2004	24	24 100.00%				
2005	29	27 93.10%				2 6.90%
2006	30	29 96.67%	1 3.33%			
2007	72	70 97.22%	1 1.39%	1 1.39%		
2008	25	25 100.00%				
2009	24	24 100.00%				
2010	20	20 100.00%				
2011	27	26 96.30%	1 3.70%			
2012	33	33 100.00%				
2013	27	27 100.00%				

**Elbow**

<i>Report Year</i>	<i>Cases</i>	<i>Normal %</i>	<i>Grade 1 %</i>	<i>Grade 2 %</i>	<i>Grade 3 %</i>	<i>Borderline %</i>
2014	31	31 100.00%				
2015	35	35 100.00%				
2016	32	31 96.88%	1 3.13%			
2017	43	43 100.00%				
2018	57	57 100.00%				
<b>Totals</b>	<b>619</b>	<b>611</b> <b>98.71%</b>	<b>4</b> <b>0.65%</b>	<b>1</b> <b>0.16%</b>		<b>3</b> <b>0.48%</b>

### Adult Onset Neuropathy

<i>Report year</i>	<i>Cases</i>	<i>Normal</i>	<i>% Normal</i>	<i>Abnormal</i>	<i>% Abnormal</i>	<i>Carrier</i>	<i>% Carrier</i>
<b>Cocker Spaniel</b>							
2017	1	1	100.0				
2018	59	51	86.4			8	13.6
<b>Totals</b>	<b>60</b>	<b>52</b>	<b>86.7</b>			<b>8</b>	<b>13.3</b>

### Baer Hearing Test

<i>Report year</i>	<i>Cases</i>	<i>Normal</i>	<i>% Normal</i>	<i>Abnormal</i>	<i>% Abnormal</i>	<i>Equivocal</i>	<i>% Equivocal</i>
<b>Cocker Spaniel</b>							
2009	1	1	100.0				
2015	1	1	100.0				
2016	3	3	100.0				
<b>Totals</b>	<b>5</b>	<b>5</b>	<b>100.0</b>				

### Cardiac

<i>Report year</i>	<i>Cases</i>	<i>Normal</i>	<i>% Normal</i>	<i>Abnormal</i>	<i>% Abnormal</i>	<i>Equivocal</i>	<i>% Equivocal</i>
<b>Cocker Spaniel</b>							
1996	1	1	100.0				
1998	5	5	100.0				
1999	6	5	83.3			1	16.7
2000	7	7	100.0				
2001	3	3	100.0				
2002	1	1	100.0				
2003	8	8	100.0				
2004	13	13	100.0				
2005	9	7	77.8			2	22.2
2006	6	6	100.0				
2007	10	10	100.0				
2008	4	4	100.0				
2009	5	5	100.0				
2010	18	18	100.0				
2011	7	7	100.0				
2012	8	8	100.0				
2013	30	30	100.0				
2014	30	30	100.0				
2015	56	56	100.0				
2016	48	48	100.0				
2017	80	80	100.0				
2018	62	62	100.0				
<b>Totals</b>	<b>417</b>	<b>414</b>	<b>99.3</b>			<b>3</b>	<b>0.7</b>

### Degenerative Myelopathy

<i>Report year</i>	<i>Cases</i>	<i>Normal</i>	<i>% Normal</i>	<i>Abnormal</i>	<i>% Abnormal</i>	<i>Carrier</i>	<i>% Carrier</i>
<b>Cocker Spaniel</b>							
2009	1					1	100.0

### Degenerative Myelopathy

<i>Report year</i>	<i>Cases</i>	<i>Normal</i>	<i>% Normal</i>	<i>Abnormal</i>	<i>% Abnormal</i>	<i>Carrier</i>	<i>% Carrier</i>
2010	1	1	100.0				
2011	1	1	100.0				
2012	2	2	100.0				
2014	1	1	100.0				
2015	1	1	100.0				
2016	3	3	100.0				
2017	1	1	100.0				
2018	1	1	100.0				
<b>Totals</b>	<b>12</b>	<b>11</b>	<b>91.7</b>			<b>1</b>	<b>8.3</b>

### Dentition Database

<i>Report year</i>	<i>Cases</i>	<i>Normal</i>	<i>% Normal</i>	<i>Abnormal</i>	<i>% Abnormal</i>
<b>Cocker Spaniel</b>					
2014	9	9	100.0		
2015	1	1	100.0		
2016	8	7	87.5	1	12.5
2017	24	22	91.7	2	8.3
2018	15	15	100.0		
<b>Totals</b>	<b>57</b>	<b>54</b>	<b>94.7</b>	<b>3</b>	<b>5.3</b>

### Eyes

<i>Report year</i>	<i>Cases</i>	<i>Normal</i>	<i>% Normal</i>	<i>Abnormal</i>	<i>% Abnormal</i>	<i>Breeder opt.</i>	<i>% Breeder opt.</i>
<b>Cocker Spaniel</b>							
2012	8	3	37.5			5	62.5
2013	146	75	51.4	4	2.7	67	45.9
2014	201	91	45.3	5	2.5	105	52.2
2015	304	151	49.7	10	3.3	143	47.0
2016	259	126	48.7	7	2.7	126	48.7
2017	288	130	45.1	9	3.1	149	51.7
2018	265	124	46.8	9	3.4	132	49.8
<b>Totals</b>	<b>1471</b>	<b>700</b>	<b>47.6</b>	<b>44</b>	<b>3.0</b>	<b>727</b>	<b>49.4</b>

### Legg-Calve-Perthes

<i>Report year</i>	<i>Cases</i>	<i>Normal</i>	<i>% Normal</i>	<i>Abnormal</i>	<i>% Abnormal</i>
<b>Cocker Spaniel</b>					
2002	1	1	100.0		
2005	1922	1922	100.0		
2006	16	16	100.0		
2007	4	4	100.0		
2008	5	5	100.0		
2009	3	3	100.0		
2010	3	3	100.0		
2011	2	2	100.0		
2012	5	5	100.0		

### Legg-Calve-Perthes

<i>Report year</i>	<i>Cases</i>	<i>Normal</i>	<i>% Normal</i>	<i>Abnormal</i>	<i>% Abnormal</i>
2013	1	1	100.0		
2015	4	4	100.0		
2016	4	4	100.0		
2017	3	3	100.0		
2018	15	14	93.3	1	6.7
<b>Totals</b>	<b>1988</b>	<b>1987</b>	<b>100.0</b>	<b>1</b>	<b>0.1</b>

### Patella

<i>Report year</i>	<i>Cases</i>	<i>Normal</i>	<i>% Normal</i>	<i>Abnormal</i>	<i>% Abnormal</i>
<b>Cocker Spaniel</b>					
1994	5	1	20.0	4	80.0
1995	33	17	51.5	16	48.5
1996	24	14	58.3	10	41.7
1997	26	11	42.3	15	57.7
1998	28	13	46.4	15	53.6
1999	22	11	50.0	11	50.0
2000	30	25	83.3	5	16.7
2001	38	36	94.7	2	5.3
2002	37	34	91.9	3	8.1
2003	32	32	100.0		
2004	38	33	86.8	5	13.2
2005	52	45	86.5	7	13.5
2006	83	75	90.4	8	9.6
2007	96	86	89.6	10	10.4
2008	52	49	94.2	3	5.8
2009	40	39	97.5	1	2.5
2010	59	57	96.6	2	3.4
2011	48	47	97.9	1	2.1
2012	56	50	89.3	6	10.7
2013	71	69	97.2	2	2.8
2014	74	72	97.3	2	2.7
2015	101	101	100.0		
2016	94	92	97.9	2	2.1
2017	155	154	99.4	1	0.7
2018	139	137	98.6	2	1.4
<b>Totals</b>	<b>1433</b>	<b>1300</b>	<b>90.7</b>	<b>133</b>	<b>9.3</b>

### Phosphofruktokinase Deficiency

<i>Report year</i>	<i>Cases</i>	<i>Normal</i>	<i>% Normal</i>	<i>Abnormal</i>	<i>% Abnormal</i>
<b>Cocker Spaniel</b>					
1997	1	1	100.0		
2005	1	1	100.0		
2008	2	2	100.0		
2009	2	2	100.0		
2010	12	12	100.0		
2011	1	1	100.0		
2013	1	1	100.0		

### Phosphofructokinase Deficiency

<i>Report year</i>	<i>Cases</i>	<i>Normal</i>	<i>% Normal</i>	<i>Abnormal</i>	<i>% Abnormal</i>
2015	1	1	100.0		
2016	5	5	100.0		
<b>Totals</b>	<b>26</b>	<b>26</b>	<b>100.0</b>		

### Progressive Retinal Atrophy

<i>Report year</i>	<i>Cases</i>	<i>Normal</i>	<i>% Normal</i>	<i>Abnormal</i>	<i>% Abnormal</i>	<i>Carrier</i>	<i>% Carrier</i>
<b>Cocker Spaniel</b>							
2005	2	2	100.0				
2008	5	5	100.0				
2009	7	7	100.0				
2010	21	21	100.0				
2011	7	7	100.0				
2012	5	5	100.0				
2013	3	3	100.0				
2014	3	2	66.7			1	33.3
2015	7	7	100.0				
2016	19	18	94.7			1	5.3
2018	5	5	100.0				
<b>Totals</b>	<b>84</b>	<b>82</b>	<b>97.6</b>			<b>2</b>	<b>2.4</b>

### Shoulder

<i>Report year</i>	<i>Cases</i>	<i>Normal</i>	<i>% Normal</i>	<i>Abnormal</i>	<i>% Abnormal</i>
<b>Cocker Spaniel</b>					
2005	3	3	100.0		
2015	3	3	100.0		
<b>Totals</b>	<b>6</b>	<b>6</b>	<b>100.0</b>		

### Thyroid

<i>Report year</i>	<i>Cases</i>	<i>Normal</i>	<i>% Normal</i>	<i>Abnormal</i>	<i>% Abnormal</i>	<i>Equivocal</i>	<i>% Equivocal</i>
<b>Cocker Spaniel</b>							
1996	4	2	50.0			2	50.0
1997	4	4	100.0				
1998	6	4	66.7	1	16.7	1	16.7
1999	4	3	75.0			1	25.0
2000	6	4	66.7			2	33.3
2001	8	6	75.0			2	25.0
2002	15	13	86.7	1	6.7	1	6.7
2003	9	9	100.0				
2004	17	13	76.5	3	17.7	1	5.9
2005	12	11	91.7	1	8.3		
2006	26	25	96.2			1	3.9
2007	31	24	77.4	2	6.5	5	16.1
2008	23	15	65.2	2	8.7	6	26.1
2009	9	7	77.8	1	11.1	1	11.1

## Thyroid

<i>Report year</i>	<i>Cases</i>	<i>Normal</i>	<i>% Normal</i>	<i>Abnormal</i>	<i>% Abnormal</i>	<i>Equivocal</i>	<i>% Equivocal</i>
2010	17	16	94.1			1	5.9
2011	16	14	87.5	1	6.3	1	6.3
2012	14	12	85.7	2	14.3		
2013	13	9	69.2	1	7.7	3	23.1
2014	13	11	84.6	1	7.7	1	7.7
2015	21	18	85.7	1	4.8	2	9.5
2016	21	16	76.2	3	14.3	2	9.5
2017	19	18	94.7	1	5.3		
2018	18	13	72.2	3	16.7	2	11.1
<b>Totals</b>	<b>326</b>	<b>267</b>	<b>81.9</b>	<b>24</b>	<b>7.4</b>	<b>35</b>	<b>10.7</b>